

UCHIDA

AJCHAIR 2





AJCHAIR2 [エージェイ チェア 2]

成長したアイデンティティ。
An extension of AJ Chair's identity.

One of our iconic chairs, AJ is now renewed from scratch, keeping the attractive features of the first AJ while adding refined functions and design details to cater to today's working way and environment.

AJ2 makes any scene, any environment more vibrant and sophisticated.

Designed by _____

Takashi Asaka / Akinari Asaka

Design Studio: TRIFORM



Established in 1979. Takashi Asaka and Akinari Asaka joined since 1993 and 2000 respectively in Uchida's mission for the development of office chairs. They are active and specialize in the design development, which shows maker's philosophy and skills. Takashi Asaka acts as the chairperson of Japan Industrial Designer Association and he won many awards in the past years, e.g. iF Award, Maninchi Interior Design Award etc.



人の身体や動きに呼応する
ポリアミド3Dメッシュ

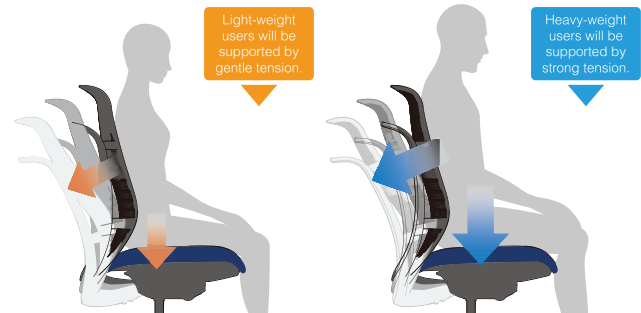
3D mesh that reacts to the human body.

Bigger vents are intentionally allocated around the shoulder area of the mesh backrest to change the shape flexibly when leaning, stretching, or turning around. Vents around the lower back area are made smaller to support the lumbar firmly.

座る人に合わせて反力が調整される
オートセンシングメカニズム

Weight Sensing Mechanism.

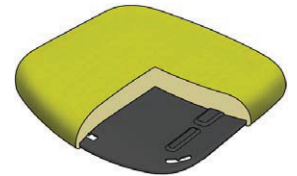
Weight sensing mechanism that can adjust backrest tension to interact with user's feature. It provides optimum sitting mode without any special adjustment.



快適な体圧分散と多様な座り方に対応する
豊かなクッション性のシート

Abundant Volume Seat Cushion.

50mm thickness cushion produced by firm urethane will receive your weight properly and promote best body pressure distribution for comfort even during long period of sitting.



Reclining
リクライニング機構



Reclining backrest in the range of 20°. And lockable at forefront and backmost.

Height Adjustment
ガス式上下調整



Able to adjust seat height in line with your body feature from SH410mm to 500mm.

Seat Slide
座奥調整機構



Seat depth can be individually adjusted within the range of 40mm distance by easy operation.

Easy Operation
イーザーオペレーション



Height adjustment & backrest locking can be done by only one lever and one action.

Adjustable Armrest
アジャスタブル肘



Pleasant soft arm pad with adjustable functions. Height can be adjusted within the range of 80mm. Also able to move pad position back and forth individually.



Ash Grey Mesh without Armrest



Black Mesh with Adjustable Armrest



Slate Grey Mesh with Headrest & Adjustable Armrest



Slate Grey Mesh with Jacket Hanger without Armrest



Slate Grey Mesh with Jacket Hanger & Adjustable Armrest



Ash Grey Mesh with Headrest, Jacket Hanger & Adjustable Armrest

Mesh Selection

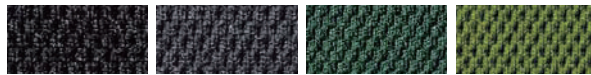


Black

Slate Grey

Ash Grey

Fabric Selection for Seat

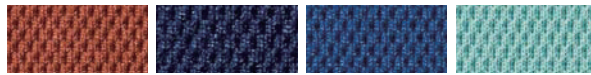


Black

Dark Grey

Dark Green

Grass Green



Orange

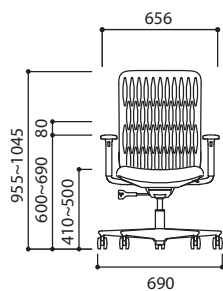
Dark Blue

Blue

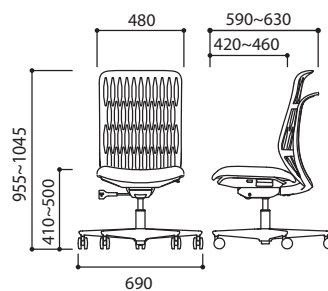
Aqua Blue

Completely customizable based on your preference. Choose from our available 3 resin mesh tones and 8 fabric colours.

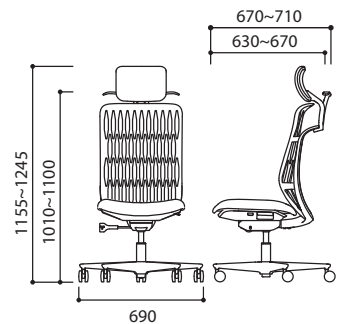
Optional accessories such as Jacket Hanger and Headrest are also available, depending on your needs.



With Adjustable Armrest



Without Armrest



With Jacket Hanger & Headrest

